

# Part Number INDEX

Part Number	Products Name	Pages
<b>0 – 9</b>		
05-LHP	He-Ne Lasers	H006
05-LPL	Power Supplies for He-Ne Lasers	H007
05-STP	Stabilized He-Ne Lasers	H007
817	Laser Classification Labels	H025
817	Laser Warning Labels	H025
817	Laser Controlled Area Signs	H025
838	Laser Warning Labels	H025
<b>A</b>		
AD-M6-M2	M6-M2 Conversion Adapters	D030
AD-M6-M4	M6-M4 Conversion Adapters	D030
AFA/AFB	Grease	G110
AFE-GREASE-C	Low dust generation grease for clean room environments	G110
AGL	Aspheric Condenser Lenses	B159
AGL-15/AGL-20	Aspheric Plano Convex Lens	B158
AGL2	Aspheric Micro Lens	B160
AIS	$\alpha(\beta)$ axis Tilt Stages	E194
ALHN-3	Three-axis Lens Holders (Plate Type)	C037
ALHN-3RO	Three-axis Lens Holders (Post Type)	C036
ALHN-5	Five-axis Lens Holders (Plate Type)	C037
ALHN-5RO	Five-axis Lens Holders (Post Type)	C036
AND-M6-M4	Adapter Nuts	D063
AND	Absorptive Neutral Density Filter Unmounted (Visible)	B213
ANDY	Absorptive Neutral Density Filter Unmounted (YAG Laser)	B213
AOR-M26.0	Adapter	A022
AOS-M26.0	Adapter	A022
ASS	Alignment Software	A031
ATL	Visible Spectrum Achromats	B180
<b>B</b>		
BBP	Flare Plates	C069
BD	Beam Dumps	C070
BE-10600	Laser Beam Expanders for CO <sub>2</sub> Lasers	B207
BE	Laser Beam Expanders With diopter correction function	B200
BE-M	HOLDERS for Laser Beam Expanders	C054
BHAN-DM	Gimbal Beamsplitter Holders	C028
BHAN-S	Gimbal Beamsplitter Holders	C028
BEHP	High Power Laser Beam Expander	B198
BEZHP	High-power zoom type laser beam expander	B199
BIOS-LS-S	BIOS-Light for upright microscope	A059
BIOS-LT-S	BIOS-Light for inverted microscopes	A058
BIOS-T	Motorized XY stage system for inverted microscopes	A060
BIOS-S	Motorized XY stage system for upright microscope	A061
BLF	Blue Filters	B233
BLZ	Z Angle Brackets	D046
BRS	High Stability Ball Plunger Post Holders	D042
BRS	Adapters for High Stability Type Post Holders	D042
BS4	Beam Samplers	B066
BSC	Base Clamps	D030
BSH2	Shutter Systems for Microscope	A057
BSHL-2	Vertical Control Gimbal Mirror and Beamsplitter Holders	C022
BSHL-BP	Base Plates for Kinematic Mirror Holders	C023
BSHL-TF	Vertical Control Gimbal Mirror and Beamsplitter Holders	C022
BSP	Base Plate	D028
BSP-1016N	Baseplate	D062
BSP-1020N	Baseplate	D062
BSR	Beam Steering Holders	C032
BSRU	Precision Beam Steering Assembly	C032

Application Systems

Optics & Optical Coatings

HOLDERS

Bases

Manual Stages

Actuators

Motorized Stages

Light Sources

Index

Part Number

## Part Number INDEX

	Part Number	Products Name	Pages
	<b>C</b>		
Application Systems	Case	Filter Case	B261
Optics & Optical Coatings	CAA-LS	Carriers for Medium Optical Rails	D025
	CAA-L	Carriers for Large Optical Rails	D023
	CAA-MB	Carriers for Medium Optical Rails	D025
Holders	CACM	C Mount	A019
	CCB	Corner Cube Prisms	B272
	CCF	Color Correction Filter	B237
Bases	CCHN	Cross Clamps	D050
	CDL	Achromatic cylindrical lens	B179
Manual Stages	CHA	Adjustable Cylindrical Lens Holders	C044
	CHS	Thread Adapters	D049
	CLB-N	Cylindrical Plano-concave Lenses (BK7)	B147
	CLB-P	Cylindrical Plano-convex Lenses (BK7)	B140
Actuators	CLDF	Cold Filters	B242
	CLDM	Cold Mirrors	B243
Motoeized Stages	CLSQ-N	Cylindrical Plano-concave Lenses (Synthetic Fused Silica)	B147
	CLSQ-P	Cylindrical Plano-convex Lenses (Synthetic Fused Silica)	B140
Light Sources	CMH	Camera Holders	C068
	CPC	Parabolic lens of internal reflection type	B280
	CRHN	Rotary Cross Clamps	D051
	CSCH	Chromium Cube Half Mirrors	B049
	CSM	Dielectric Cube Beamsplitters	B060
	CSMH	Dielectric Cube Half Mirrors	B050
	Custom-made	Z-polarizer	B103
	Custom-made	FAC Collimated Lens	B161
	Custom-made	Polymer Notch Filter	B260
	Custom-made	Etalon	B262
	Custom-made	Brewster dispersing littrow type prism	B277
	Custom-made	Optical flats with hole	B299
	Custom-made	Custom curved mirror	B310
	Custom-made	Master Optics	B314
	Custom-made	Brewster Windows	B325
	<b>D</b>		
	D15D15A	D15D15A Cable	G108
	D15RP	D15RP-CA Cable	G108
	DAC-SG	DAC Cable	G108
	DAU-080A	Motorized 12-axis (6-axis) Optical Fiber Alignment Stage Unit	A028
	DAU-080M	Manual 12-axis (6-axis) Optical Fiber Alignment Stage Unit	A028
	DAU-120A	Motorized 3-axis XYθ Stage Unit	A029
	DBH	Dove Prisms Holders	B089
	DBSP-1	D-TOP Base plate	A043
	DBSP-2	D-TOP Base plate	A043
	DEQ	Quartz Depolarizers	B089
	DFB1	Ground Glass Diffusers (BK7)	B228
	DFO	Opal Diffusion Glass	B229
	DFSQ1	Ground Glass Diffusers (Synthetic Fused Silica)	B228
	DHR-CA-3	DHR-CA Cable	G109
	DIF	Visible range dichroic filters	B239
	DIM	Visible range dichroic filters	B241
	DIMC	Dichroic case for laser introduction	A019
	DL-NM	Negative achromatic lens	B177
	DL-PNIR	Near infrared achromatic lens	B176
	DLB	Achromatic Doublets	B172
	DOP	Dust-Off Plus	B366
	DOP	Dove Prisms	B276
	DOBC-2632	D-TOP Breadboard	A043
	DPB	Equilateral Dispersing Prisms	B274
	DPTIH11	Equilateral Dispersing Prisms	B274
	DPSQ	Equilateral Dispersing Prisms	B274

Part Number	Products Name	Pages
<b>DR</b>	Delrin Washers	<b>C039</b>
<b>Drivers</b>	Drivers	<b>G020</b>
<b>DRU</b>	Darkroom Kits	<b>D018</b>
<b>DRU</b>	Clean Darkroom Equipment	<b>D019</b>
<b>DRU</b>	Spirit Levels	<b>D019</b>
<b>DRUC</b>	Clean Darkroom Kits	<b>D018</b>
<b>DTM-05-LHP-111</b>	Laser Module	<b>A046</b>
<b>DTM-CLMI</b>	Coherent Length Measuring Machine	<b>A045</b>
<b>DTM-DTPF-15C-32</b>	Mirror Module	<b>A046</b>
<b>DTM-HBCH-20-550</b>	Polarizer Module	<b>A046</b>
<b>DTM-MLF-SF</b>	Hybrid Cube Half Mirror Module	<b>A047</b>
<b>DTM-MMHI</b>	Micro Observation Interferometer	<b>A044</b>
<b>DTM-PSM33-30C03-0W-550</b>	Prototype Beam Splitter Module	<b>A046</b>
<b>DTM-PSMH-30C03-10-550</b>	Camera Module	<b>A047</b>
<b>DTM-RMFI</b>	R Measuring interferometer	<b>A044</b>
<b>DTM-SKDCE-3</b>	1/4 (or 1/2) Waveplate Module	<b>A046</b>
<b>DTM-PBS-20-6328</b>	PBS Module	<b>A047</b>
<b>DTM-SLB (or DLB)</b>	Lens Module	<b>A046</b>
<b>DTM-TFA-30C05-10</b>	Moveable Mirror Module	<b>A047</b>
<b>DTM-WPP-15C0633-4M (or -2M)</b>	Optical Path Switching Mirror Module	<b>A046</b>

## E

<b>ECM</b>	Color Correction Filter	<b>B237</b>
<b>ECS/ECC</b>	ECS Positioners – ECS series (Attocube)	<b>G118</b>
<b>EDL</b>	Excimer Laser Focusing Lenses	<b>B184</b>
<b>EL-10-30</b>	Focus Tunable lens	<b>B205</b>
<b>EMS</b>	Thin film design software (Essential Macleod)	<b>B339</b>
<b>EPCMA</b>	C Mount Adapters for Eyepiece Port	<b>A024</b>
<b>EPL</b>	Long Working Distance Objective Lenses	<b>B194 etc</b>
<b>EPLE</b>	Long Working Distance Objective Lenses	<b>B194 etc</b>
<b>ETL</b>	Excimer Laser Focusing Lenses	<b>B184</b>

## F

<b>FAD</b>	Filter Holder Adapter	<b>C065</b>
<b>FBP</b>	Base Plate	<b>D028</b>
<b>FEL</b>	Fly-Eye Lens	<b>B152</b>
<b>FH</b>	Filter Holders	<b>C065</b>
<b>FHS</b>	Filter Holder - CS Type	<b>C065</b>
<b>FINE</b>	1 axis SFS Controller with Analog Input Function	<b>G117</b>
<b>FLM</b>	Low Dispersion Mirrors for Femtosecond Laser	<b>B011</b>
<b>FLMHP</b>	Low Dispersion Mirrors for High Power Femtosecond Laser	<b>B011</b>
<b>FMB</b>	Optical Path Switching Mounts	<b>C018</b>
<b>FND</b>	Reflective Neutral Density Filter Unmounted (Visible)	<b>B219</b>
<b>FNDU</b>	Reflective Neutral Density Filter Unmounted (UV)	<b>B219</b>
<b>FOM</b>	Fiber Optics Mounts	<b>C071</b>
<b>FOP</b>	FC Type Fiber Optics Holders	<b>C074</b>
<b>FOP-ADP</b>	Adapters for Ferrule	<b>C074</b>
<b>FOP-SMA</b>	SMA Type Fiber Optics Holders	<b>C075</b>
<b>FOP-DM-SMA</b>	SMA Type Fiber Optics Holders	<b>C075</b>
<b>FOP-ADP-SMA</b>	Receptacle for SMA Type Fiber Holder	<b>C075</b>
<b>FOPT</b>	Laser Focusing Holder	<b>C076</b>
<b>FPSA</b>	Fine-pitch Screw Adjusters	<b>F010</b>
<b>FRB</b>	Fresnel Rhomb Waveplates	<b>B091</b>
<b>FRH</b>	Fresnel Rhomb Waveplate Holders	<b>B091</b>
<b>FRL</b>	Fresnel Lens	<b>B153</b>
<b>FSL</b>	Precision Pinholes for High Energy Laser	<b>C059</b>
<b>f<math>\theta</math></b>	f $\theta$ Lenses	<b>G186</b>
<b>f<math>\theta</math></b>	f $\theta$ Lenses for YAG	<b>G186</b>
<b>f<math>\theta</math>-10600</b>	f $\theta$ Lenses for CO <sub>2</sub> Lasers	<b>G206</b>

Application Systems

Optics & Optical Coatings

Holders

Bases

Manual Stages

Actuators

MotORIZED Stages

Light Sources

Index

Part Number

## Part Number INDEX

Part Number	Products Name	Pages
-------------	---------------	-------

## G

<b>Application Systems</b>	<b>GBSMU</b>	Frameless Beamsplitter Unit	<b>B014</b>
<b>Optics &amp; Optical Coatings</b>	<b>GCM</b>	Negative Dispersion Mirrors for Femtosecond Laser	<b>B013</b>
	<b>GFM</b>	Negative Dispersion Mirrors for Femtosecond Laser	<b>B013</b>
	<b>GIP-101</b>	Intelligent Positioning System	<b>G101 etc</b>
<b>Holders</b>	<b>GLP</b>	Glan Laser Prisms	<b>B095</b>
	<b>GLPB</b>	Glan Laser Prisms	<b>B095</b>
<b>Bases</b>	<b>GMMUHP</b>	Frameless Mirror Unit	<b>B014</b>
	<b>GOH-15A</b>	$\alpha$ axis Goniometers	<b>E182</b>
	<b>GOH-25A</b>	$\alpha$ axis Goniometers	<b>E182</b>
	<b>GOH-25B</b>	$\alpha\beta$ axis Goniometers	<b>E182</b>
<b>Manual Stages</b>	<b>GOH-40A</b>	$\alpha$ axis Goniometers	<b>E184</b>
	<b>GOH-40B</b>	$\alpha\beta$ axis Goniometers	<b>E184</b>
	<b>GOH-60A</b>	$\alpha$ axis Goniometers	<b>E186</b>
<b>Actuators</b>	<b>GOH-60B</b>	$\alpha\beta$ axis Goniometers	<b>E186</b>
	<b>GOH-65A</b>	$\alpha$ axis Goniometers	<b>E188</b>
<b>Motoeized Stages</b>	<b>GOH-65B</b>	$\alpha\beta$ axis Goniometers	<b>E188</b>
	<b>GOHB-40A</b>	$\alpha$ axis Screw Goniometers with V-Grooved Guide	<b>E190</b>
	<b>GOHB-60A</b>	$\alpha$ axis Screw Goniometers with V-Grooved Guide	<b>E191</b>
<b>Light Sources</b>	<b>GOHS-40A</b>	$\alpha$ axis Stainless Steel Goniometers	<b>E215</b>
	<b>GOHS-40B</b>	$\alpha\beta$ axis Stainless Steel Goniometers	<b>E215</b>
	<b>GOHT-AP</b>	Attachment Pins	<b>E010</b>
<b>Index</b>	<b>GOHT-40A</b>	Extended Contact Ball Slide Goniometers	<b>E168</b>
	<b>GOHT-40A-S</b>	Extended Contact Micrometer Goniometers	<b>E176</b>
	<b>GOHT-40B</b>	$\alpha\beta$ axis Extended Contact Ball Slide Goniometers	<b>E170</b>
<b>Part Number</b>	<b>GOHT-60A</b>	Extended Contact Ball Slide Goniometers	<b>E172</b>
	<b>GOHT-60A-S</b>	Extended Contact Micrometer Goniometers	<b>E178</b>
	<b>GOHT-60B</b>	$\alpha\beta$ axis Extended Contact Ball Slide Goniometers	<b>E172</b>
	<b>GOHT-65A</b>	Extended Contact Ball Slide Goniometers	<b>E174</b>
	<b>GOHT-65A-S</b>	Extended Contact Micrometer Goniometers	<b>E180</b>
	<b>GOHT-65B</b>	$\alpha\beta$ axis Extended Contact Ball Slide Goniometers	<b>E174</b>
	<b>GOHTA-120A</b>	$\alpha$ axis Goniometers	<b>E192</b>
	<b>GOHTA-120B</b>	$\alpha\beta$ axis Goniometers	<b>E192</b>
	<b>GP-IB</b>	GP-IB Cable	<b>G109</b>
	<b>GP-6BK</b>	White LED Light	<b>D019</b>
	<b>GRF</b>	Green Filter	<b>B233</b>
	<b>GSC-01</b>	Single axis Stage Controller	<b>G098 etc</b>
	<b>GSC-02</b>	2 axis Stage Controller	<b>G099 etc</b>
	<b>GSE-CA-3</b>	GSE-CA Cable	<b>G109</b>
	<b>GTPB</b>	Glan Thompson Prisms	<b>B094</b>
	<b>GTPC-ADP</b>	Polarizing Prism Adapter	<b>C051</b>
	<b>GTPC-SPH</b>	Polarizing Prism Holders (Precision Type)	<b>C051</b>
	<b>GTPC-PH</b>	Polarizing Prism Holders (Simple Type)	<b>C051</b>
	<b>GTPC</b>	Glan Thompson Prisms	<b>B094</b>
	<b>GYPB</b>	Glan Tayler Prisms	<b>B096</b>
	<b>GYPC</b>	Glan Tayler Prisms	<b>B096</b>

## H

	<b>H-D-M2</b>	Dry Cabinet (Electronic Drying Case)	<b>B348</b>
	<b>HAF</b>	Heat Absorbing Filters	<b>B235</b>
	<b>HBCH</b>	Hybrid Cube Half Mirrors	<b>B048</b>
	<b>HCS-H</b>	Helicoidal 15mm Jacks	<b>D045</b>
	<b>HDS-YAW</b>	High durability automatic rotation stages	<b>G080</b>
	<b>HFDLSQ</b>	Focusing Lenses for Fiber Laser	<b>B182</b>
	<b>HFTLSQ</b>	Focusing Lenses for Fiber Laser	<b>B182</b>
	<b>HIT-M/S</b>	Extensible Stage Controller	<b>G103</b>
	<b>HL</b>	Replacement Lamps for Tungsten Halogen Fiber Illumination Systems	<b>H033</b>
	<b>HMPQP</b>	Optical Flats	<b>B312</b>
	<b>HMPZP</b>	Optical Flats	<b>B312</b>
	<b>HOTM</b>	Ultra-Violet Hot Mirrors	<b>B244</b>

Part Number	Products Name	Pages
<b>HPS</b>	High Performance Motorized Stages	<b>G028</b>
<b>HPS120-20X-SET</b>	Motorized Stage/Controller/Cable Sets (XY axis Set)	<b>G026</b>
<b>HPS60-20X-SET</b>	Motorized Stage/Controller/Cable Sets (X axis Set)	<b>G026</b>
<b>HPS/HDS120-XY<math>\theta</math>-SET</b>	Motorized Stage/Controller/Cable Sets (Xy $\theta$ axis Set)	<b>G027</b>
<b>HTFM-MHG</b>	Holder Attached Surface Accuracy Guaranteed Mirrors	<b>B018</b>
<b>HTFM</b>	Surface Accuracy Guaranteed Mirror	<b>B016</b>
<b>I</b>		
<b>IDC</b>	Iris Diaphragm	<b>C062</b>
<b>IFC-AL</b>	Adjustment Lens Component	<b>A040</b>
<b>IFC2-UC</b>	Camera Component	<b>A039</b>
<b>IFC2-KL</b>	Imaging Lens Component	<b>A039</b>
<b>IFC2-IR</b>	Iris Diaphragm Component	<b>A040</b>
<b>IFC2-CL</b>	Collimator Lens Component	<b>A038</b>
<b>IFC2-SC</b>	Screen Component	<b>A039</b>
<b>IFC2-SF</b>	Spatial Filter Component	<b>A038</b>
<b>IFC2-BS</b>	Beamsplitter Component	<b>A039</b>
<b>IFC2-AF</b>	Filter Component	<b>A039</b>
<b>IFC2-PF</b>	Polarization Filter Component	<b>A040</b>
<b>IFC2-M</b>	Mirror Component	<b>A038</b>
<b>IFC2-BD</b>	Stray Light Block Component	<b>A039</b>
<b>IFC2-L</b>	Laser Component	<b>A038</b>
<b>IFS2-FZ-25</b>	Fizeau Interferometer	<b>A036</b>
<b>IFS2-MI-25</b>	Michelson Interferometer	<b>A036</b>
<b>IFS2-MZ-25</b>	Mach-Zehnder Interferometer	<b>A036</b>
<b>IFS2-CMR</b>	Camera Observation Unit	<b>A037</b>
<b>IH-30N</b>	Iris Diaphragm	<b>C062</b>
<b>IH</b>	Iris Diaphragm Holders	<b>C061</b>
<b>IMH-250</b>	Metal Halide Fiber Illumination Systems	<b>H034</b>
<b>IPWS</b>	Linear Stainless Steel Ways	<b>E196</b>
<b>IR-LEGO</b>	IR-LEGO Infrared Laser-Evoked Gene Operator	<b>A056</b>
<b>ITF</b>	IR Transmitting Filters	<b>B231</b>
<b>J</b>		
<b>JB-400</b>	Jog Operation Box	<b>G107</b>
<b>JD-100</b>	Jog Dial	<b>G106</b>
<b>JS-300</b>	Joy Stick	<b>G107</b>
<b>K</b>		
<b>KCL</b>	Hex Wrench with Knob	<b>F010</b>
<b>KKD</b>	Prism Holders	<b>C047</b>
<b>KKD</b>	$\theta\alpha\beta$ axis Stages	<b>E193</b>
<b>KLSA/KLSS</b>	Thin Long Travel Stage	<b>G058</b>
<b>KMH</b>	Square Optics Holders	<b>C068</b>
<b>KRPB</b>	Knife Edge Right Angle Prisms	<b>B270</b>
<b>KRPB4</b>	Knife Edge Right Angle Prisms (with a Coat)	<b>B271</b>
<b>KSC</b>	$\theta$ axis Rotation Stages	<b>E164</b>
<b>KSP-256/406</b>	$\theta$ axis Rotation Stages	<b>E158</b>
<b>KSP-606/656/786</b>	$\theta$ axis Rotation Stages	<b>E158</b>
<b>KSPA</b>	$\theta$ axis Rotation Stages with Aperture	<b>E160</b>
<b>KSPB</b>	$\theta$ axis Rotation Stages with Aperture	<b>E162</b>
<b>KSPS</b>	Stainless Steel Rotation Stages	<b>E214</b>
<b>KSPT</b>	Thin Type Rotation Stage with Central Aperture	<b>E156</b>
<b>KSSA</b>	$\theta$ axis Rotation Stages with Square Top	<b>E164</b>
<b>KST-X</b>	Precision Motorized Stages - 5 Phase Stepping Motor	<b>G062</b>
<b>KST-XY</b>	Precision Motorized Stages - 5 Phase Stepping Motor	<b>G066</b>
<b>KST-Z</b>	Precision Motorized Stages - 5 Phase Stepping Motor	<b>G068</b>
<b>KST-YAW</b>	Precision Rotation Motorized Stages	<b>G078</b>
<b>KST(GS)</b>	Precision Motorized Stages with built in Glass-scale Encoder	<b>G064</b>

Application Systems

Optics &amp; Optical Coatings

Holders

Bases

Manual Stages

Actuators

Motorized Stages

Light Sources

Index

Part Number

## Part Number INDEX

	Part Number	Products Name	Pages
Application Systems	<b>KSW</b>	$\theta$ axis Rotation Stages (Worm Nut and Gear Drive)	<b>E165, E166</b>
	<b>KUA</b>	Corner Cube Prism Holders	<b>B272</b>
Optics & Optical Coatings	<b>L</b>		
	<b>LA</b>	Color Temperature Conversion Filter	<b>B236</b>
Holders	<b>LACR</b>	Motorized Lens Turret	<b>A022</b>
	<b>LACS</b>	Lens switching slider	<b>A022</b>
Bases	<b>LAH</b>	Cylindrical Laser Mounts	<b>C052</b>
	<b>LAH-3</b>	Adjustable Laser Holders	<b>C053</b>
Manual Stages	<b>LAHU-A</b>	Adjustable Laser Holders (with a stand)	<b>C052</b>
	<b>LAHU</b>	Adjustable Laser Holders	<b>C052</b>
Actuators	<b>LB</b>	Color Temperature Conversion Filter	<b>B236</b>
	<b>LBE-H</b>	Holders with integrated Laser Beam Expanders	<b>C055</b>
Motorized Stages	<b>LBE</b>	Laser Beam Expanders	<b>B202</b>
	<b>LBE-ADP</b>	Adapters for Laser Beam Expanders	<b>C056</b>
Light Sources	<b>LBED-YH</b>	Laser Beam Expander [with Collimation Adjustment] (with holder)	<b>C054</b>
	<b>LBED-H</b>	Laser Beam Expander [with Collimation Adjustment] (with holder)	<b>C054</b>
Index	<b>LBED</b>	Laser Beam Expanders With diopter correction function	<b>B200</b>
	<b>LBR</b>	L Angle Brackets	<b>D054</b>
Part Number	<b>LCBS</b>	Concave mirror substrate for laser	<b>B308</b>
	<b>LCP-33</b>	Laser Checker	<b>H008</b>
	<b>LDU33</b>	Laser Diode (Visible)	<b>H006</b>
	<b>LHA</b>	Adjustable Round Lens Holders	<b>C040</b>
	<b>LHCM</b>	Caliper Variable Lens Holders	<b>C038</b>
	<b>LHF</b>	Fixed Lens Holders	<b>C035</b>
	<b>LHF-S</b>	Fixed Lens Holders	<b>C035</b>
	<b>LHF-UDL</b>	Fixed Multi-element Lens Holders	<b>C045</b>
	<b>LHF-M</b>	Fixed Multi-element Lens Holders	<b>C045</b>
	<b>LHO</b>	Objective Lens Holders	<b>C046</b>
	<b>LJ/LJA</b>	Precision Labjacks	<b>E108</b>
	<b>LJA-M6</b>	Precision Labjacks	<b>E110</b>
	<b>LJA-UU</b>	Precision Labjacks	<b>E110</b>
	<b>LJP</b>	Platform for Labjacks	<b>E112</b>
	<b>LJS</b>	Adjustable Spacer Kits for Labjacks	<b>E114</b>
	<b>LLS-W</b>	LED light source for use with light-guide	<b>H026</b>
	<b>LMC</b>	Spirit Levels	<b>D019</b>
	<b>LMHB</b>	Topmike Vertical Control Mirror Holders	<b>C024</b>
	<b>LMHBP</b>	Plates for Topmike Mirror Holder	<b>C025</b>
	<b>LMMH-R</b>	Vertical Control Small Mirror Holders	<b>C019</b>
	<b>LMPAL</b>	Infrared (NIR) Objective Lenses	<b>B193</b>
	<b>LMS</b>	Laser Optical tweezers - Mini type	<b>A055</b>
	<b>LMT</b>	Spirit Levels	<b>D019</b>
	<b>LOPF</b>	Long-Pass Filters	<b>B246</b>
	<b>LPB</b>	Light Pipe	<b>B279</b>
	<b>LPH-ADP</b>	Light pipe adapter	<b>B279</b>
	<b>LPSQ</b>	Light Pipe	<b>B279</b>
	<b>LS-LHA</b>	Tungsten Halogen Fiber Illumination Systems	<b>H033 etc</b>
	<b>LST</b>	X axis Long Travel Leadscrew Stages	<b>E084</b>
	<b>LSV</b>	Z axis Long Travel Leadscrew Stages	<b>E106</b>
	<b>LWZ</b>	Zoom Microscope	<b>A014</b>
	<b>LWZ-M</b>	Zoom Microscope	<b>A014</b>
	<b>M</b>		
	<b>MAN</b>	Absorptive Neutral Density Filter Mounted (Visible)	<b>B213</b>
	<b>MANY</b>	Absorptive Neutral Density Filter Mounted (YAG Laser)	<b>B213</b>
	<b>MB</b>	Magnet Base	<b>D026</b>
	<b>MB-MX</b>	Flexible Post Holder	<b>D027</b>
	<b>MDC</b>	Angled Micrometer Heads	<b>F008</b>
	<b>MDFPC</b>	Beam Shaping Diffuser	<b>B227</b>

Part Number	Products Name	Pages
<b>MDR14-CA-2.5</b>	MDR14-CA-2.5 Cable	<b>G109</b>
<b>MFND</b>	Reflective Neutral Density Filter Mounted (Visible)	<b>G219</b>
<b>MFNDU</b>	Reflective Neutral Density Filter Mounted (UV)	<b>G219</b>
<b>MFH</b>	Mini-Fiber Optics Holders	<b>C072</b>
<b>MFH-ADP</b>	Adapters for Mini-Fiber Optics	<b>C072</b>
<b>MGF</b>	Focusing Lenses for Fiber Illumination Systems	<b>H037</b>
<b>MHA</b>	Gimballed Beamsplitter Mounts	<b>C026</b>
<b>MHAN-S</b>	Gimballed Beamsplitter Mounts	<b>C026</b>
<b>MHAN-DM</b>	Gimballed Beamsplitter Mounts	<b>C026</b>
<b>MHD</b>	Larger Precision Gimbal Mirror Holders	<b>C030</b>
<b>MHD-P</b>	Plates for Larger Precision Gimbal Mirror Holders	<b>C030</b>
<b>MHE</b>	Close-proximity Mirror Holders	<b>C029</b>
<b>MHE-DM</b>	Close-proximity Mirror Holders	<b>C029</b>
<b>MHF</b>	Differential Micrometer Heads	<b>F006</b>
<b>MHG-MP-NL</b>	NOMI LOCK™ Model Kinematic Mirror Holder	<b>C014</b>
<b>MHG-HA-NL</b>	NOMI LOCK™ Model Kinematic Mirror Holder	<b>C014</b>
<b>MHG-PAD</b>	Prism Adapter for Kinematic Mirror Holder	<b>C017</b>
<b>MHG-BPRO</b>	Plates for Kinematic Mirror Holders	<b>C016</b>
<b>MHG-MAD</b>	Adapter Mounts for Kinematic Mirror Holders	<b>C017</b>
<b>MHG-20LDU</b>	Laser Mounts	<b>C018</b>
<b>MHG-KAD</b>	45° Optics Adapters for Kinematic Mirror Holders	<b>C016</b>
<b>MHGT</b>	Kinematic Mirror Mount	<b>C013</b>
<b>MHI</b>	Offset-less Kinematic Mirror Holders	<b>C012</b>
<b>MHL-250</b>	Lamps for Metal Halide Fiber Illumination Systems	<b>H034</b>
<b>MHN</b>	Small Kinematic Mirror Holders	<b>F005</b>
<b>MINI-CA-SG</b>	MINI-CA-SG Cable	<b>G108</b>
<b>MKAD</b>	Mirror Case Adapters	<b>C021</b>
<b>MLH</b>	Small Lens Claws	<b>C042</b>
<b>MLH</b>	Selfoc® Lens Claws	<b>C043</b>
<b>MM80</b>	Surface emitting light guides (SUS flexible)	<b>H035</b>
<b>MMHN</b>	Small Kinematic Mirror Holders	<b>C020</b>
<b>MMS</b>	Micro manipulation System	<b>A054</b>
<b>MNS</b>	Nut Drivers	<b>F006</b>
<b>MPH</b>	Polarizer Holders	<b>C049</b>
<b>MPSMH</b>	Thin Plate Beamsplitter	<b>B054</b>
<b>MRL</b>	Ring light guides (SUS flexible)	<b>H035</b>
<b>MS</b>	Micro Spheres	<b>B154</b>
<b>MSL</b>	Straight light guides	<b>H035</b>
<b>MSP-25</b>	Aluminum Spacers (□25mm)	<b>D035</b>
<b>MSP-40</b>	Aluminum Spacers (□40mm)	<b>D036</b>
<b>MSP-60</b>	Aluminum Spacers (□60mm)	<b>D037</b>
<b>MX-AM</b>	Flexible Post Holder	<b>D027</b>

## N

<b>NADL</b>	Visible Spectrum Achromats	<b>B180</b>
<b>NDHN</b>	Rotating Variable Reflective ND Filter Holder	<b>B224</b>
<b>NDWH</b>	Filter Wheels	<b>C064</b>
<b>NEDL</b>	Excimer Laser Focusing Lenses	<b>B184</b>
<b>NF</b>	Notch Filter	<b>B258</b>
<b>NPAL</b>	Ultra-violet Objective Lenses	<b>B190</b>
<b>NPAL-YSTF</b>	3-Wavelengths Objective Lens	<b>B189</b>
<b>NPCH</b>	Non-polarizing Cube Half Mirrors	<b>B046</b>
<b>NRS</b>	Retaining Ring Spanners	<b>C039</b>
<b>NSPFU</b>	Sheet Polarizers	<b>B099</b>
<b>NUDL</b>	Ultra-violet Achromats	<b>B185</b>
<b>NYDL</b>	YAG Laser Focusing Lenses	<b>B181</b>
<b>NYTL</b>	YAG Laser Focusing Lenses	<b>B181</b>

Application Systems

Optics & Optical Coatings

Holders

Bases

Manual Stages

Actuators

Motoeized Stages

Light Sources

Index

Part Number



## Part Number INDEX

	Part Number	Products Name	Pages
	<b>O</b>		
Application Systems	OBA-SH	Medium Optical Rails	D024
	OBA-LH	Large Optical Rails	D022
Optics & Optical Coatings	OBB	Optical Baseplates	D033
	OBC	Optical Baseplates	D033
	OBC	Optical Baseplates	D032
Holders	OBL	Microscope Objectives	B196
	OBLR	Reflective Microscope Objectives Lenses	B197
Bases	OBT-SH/SUU	Medium Low-Profile Optical Rails	D024
	OBT-LH/LUU	Large Low-Profile Optical Rails	D022
	OBT-WL	Feet for Large Optical Rails	D025
Manual Stages	OBT-LS	Feet for Large Optical Rails	D025
	OBT-LW	Feet for Large Optical Rails	D025
	OCK	Optical Cleaning Kit	B345
Actuators	OCK-S	Optical Cleaning Kit (Handy type)	B345
	OFB	Optical Flats (BK7)	B287
Motoeized Stages	OFBP	Optical Flats (BK7)	B287
	OFH	Fiber Optics Holders	C073
	OFH-ADP	Fiber Optics Holders	C073
Light Sources	OFXP	Optical Flats (BK7)	B287
	OFSQ	Optical Flats (BK7)	B287
	OFSQP	Optical Flats (BK7)	B287
Index	OFUP2	Laser Safety Panels	H017
	OMEC	OptMike-E (B type) Controllers	F017
	OPB	Optical Parallels (BK7)	B292
Part Number	OPBA	High Parallelism Aluminum Mirrors	B030
	OPCF	CaF <sub>2</sub> windows for Ultraviolet and Infrared Laser	B320
	OPCFU	CaF <sub>2</sub> windows for Ultraviolet and Infrared Laser	B320
	OPFL	Float glass	B291
	OPGE	Germanium Windows for Infrared Laser	B324
	OPMFSP	Low Scattering Substrates (Synthetic Fused Silica)	B286
	OPNQ	Water Free Synthetic Fused Silica Windows for Infrared Laser	B318
	OPCFSP	Low Scattering Substrates (Synthetic Fused Silica)	B286
	OPSH	Sapphire Windows for Infrared Laser	B319
	OPSI	Silicon Windows for Infrared Laser	B323
	OPSQ	Optical Parallels (Synthetic Fused Silica)	B292
	OPSQA	High Parallelism Aluminum Mirrors	B030
	OPSQK	Optical Parallels (Synthetic Fused Silica)	B292
	OPSQSP	Low Scattering Substrates (Synthetic Fused Silica)	B286
	OPZS	ZnSe Windows for Infrared Laser	B321
	OS-BA-SAT	Multiple Scanning Knife-Edge beam profiler	H010
	OS-BeamOnHR	CCD Type Beam Profiler	H011
	OSDAC-30	Air Compressor	D014
	OSDOTS	Overhead Table Shelf System	D013
	OSDVIA	Active Vibration Isolation Systems	D006
	OSDVID-C	Desk type vibration Isolation systems	D010
	OSDVID-L	Desk type vibration Isolation systems	D010
	OSDVIO	High-performance Vibration Isolation Systems with Steel Honeycomb Top	D007
	OSDVIO-B	Tabletop Optical Breadbord	D012
	OSDVIO-R	Steel Honeycomb Optical Tables	D009
	OSDVIT	Desktop Vibration Isolation Systems	D011
	OSMS20-(X)	OSMS Series Translation Motorized Stages - 5 Phase Stepping Motor	G032
	OSMS20-(XY)	OSMS Series Translation Motorized Stages - 5 Phase Stepping Motor	G034
	OSMS20-(Z)	OSMS Series Translation Motorized Stages - 5 Phase Stepping Motor	G036
	OSMS20-XYZ-SET	Motorized Stage/Controller/Cable Sets (XYZ axis Set)	G027
	OSMS26-(X)	OSMS Series Translation Motorized Stages - 5 Phase Stepping Motor	G040
	OSMS26-(XY)	OSMS Series Translation Motorized Stages - 5 Phase Stepping Motor	G042
	OSMS26-(Z)	OSMS Series Translation Motorized Stages - 5 Phase Stepping Motor	G044
	OSMS33-(X)	OSMS Series Translation Motorized Stages - 5 Phase Stepping Motor	G048
	OSMS33-(XY)	OSMS Series Translation Motorized Stages - 5 Phase Stepping Motor	G050
	OSMS33-(Z)	OSMS Series Translation Motorized Stages - 5 Phase Stepping Motor	G052



Part Number	Products Name	Pages
<b>OSMS-40A</b>	Motorized Extended Guide Goniometer	<b>G082</b>
<b>OSMS-60A</b>	Motorized Extended Guide Goniometer	<b>G064</b>
<b>OSMS(CS)20-(X)</b>	Precision Motorized Stages with Built-in Compact Scale	<b>G038</b>
<b>OSMS(CS)26-(X)</b>	Precision Motorized Stages with Built-in Compact Scale	<b>G046</b>
<b>OSMS(CS)33-(X)</b>	Precision Motorized Stages with Built-in Compact Scale	<b>G054</b>
<b>OSMS-ZF</b>	Translation Motorized Stages, Flat Z axis - 5 Phase Stepping Motor	<b>G070</b>
<b>OTK</b>	Optical Tool Kits	<b>B345</b>
<b>OUCI-2</b>	Observation unit with coaxial illumination	<b>A018</b>
<b>P</b>		
<b>PA</b>	Precision Pinhole	<b>C059</b>
<b>PA-HEL</b>	Precision Pinholes for High Energy Laser	<b>C059</b>
<b>PAD</b>	Prism Holders	<b>C048</b>
<b>PAL</b>	Near Ultra-violet (NUV) Objective Lenses	<b>B192</b>
<b>PBPQ</b>	Pellin Broca prism	<b>B278</b>
<b>PBS-C</b>	Plate-type Polarizing Beamsplitters	<b>B074</b>
<b>PBS</b>	Polarizing Beamsplitters	<b>B079</b>
<b>PBSHP</b>	High Power Polarizing Beamsplitters	<b>B076</b>
<b>PBSW</b>	Broadband Polarizing Beamsplitters	<b>B077</b>
<b>PC</b>	Silent Air Compressor	<b>D017</b>
<b>PDA-1</b>	Photodiode Amplifier	<b>H009</b>
<b>PDBS</b>	Polka dot beam splitter	<b>B067</b>
<b>PELL</b>	Pellicle beam splitter	<b>B068</b>
<b>PG</b>	Protective Windows	<b>B183</b>
<b>PGC-04</b>	Pulus Generating Controller	<b>G104</b>
<b>PGH</b>	Protective Window Holders	<b>B183</b>
<b>PH</b>	Polarizer Holders	<b>C049</b>
<b>PKA</b>	Ultrasonic Motor Driven Actuator	<b>F014</b>
<b>PLC</b>	Polarcor Polarizers	<b>B101</b>
<b>PLH</b>	Prism Holders	<b>C047</b>
<b>PMH</b>	Ultra Broadband Dielectric Half Mirrors	<b>B052</b>
<b>PO</b>	Poles	<b>D047</b>
<b>POSB</b>	Rod Mount Module	<b>D046</b>
<b>PPB</b>	Penta Prisms	<b>B277</b>
<b>PR</b>	Rubber Isolators	<b>D017</b>
<b>PRS</b>	Prism Sheet	<b>B281</b>
<b>PS-20</b>	φ20 Post Holder	<b>A042</b>
<b>PS-SP</b>	Pedestal Adapters	<b>D041</b>
<b>PST</b>	Posts holders	<b>D040</b>
<b>PSC</b>	Pedestal Clamps	<b>D040</b>
<b>PSCA</b>	Pedestal Clamps	<b>D040</b>
<b>PSCS</b>	Pedestal Clamps	<b>D040</b>
<b>PSCH</b>	Chromium Plate Half Mirrors	<b>B058</b>
<b>PSL</b>	Adjustable Slits	<b>C063</b>
<b>PSM</b>	Dielectric Plate Beamsplitters	<b>B061</b>
<b>PSMH</b>	Ultra Broadband Dielectric Half Mirrors	<b>B052</b>
<b>PSMH</b>	Laser Line Plate Half Mirrors (Laser Line)	<b>B055</b>
<b>R</b>		
<b>RCCB</b>	Hollow Retro-reflectors	<b>B273</b>
<b>RC</b>	Stand Clamp	<b>D044</b>
<b>RCA</b>	Stand Base	<b>D044</b>
<b>REP</b>	Kinematic Bases/Kinematic Base Plate	<b>D031</b>
<b>RHO-13S-E2</b>	Glass Rod Homogenizers for Light Guide	<b>H037</b>
<b>RO/ROU/ROC</b>	Posts	<b>D048</b>
<b>RO-EE/UU</b>	Posts	<b>D049</b>
<b>RODB</b>	Rod Lenses	<b>B151</b>
<b>RPB</b>	Right Angle Prisms	<b>B268</b>
<b>RPB1 - 5</b>	Coated Right Angle Prisms	<b>B266</b>

Application Systems

Optics &amp; Optical Coatings

Holders

Bases

Manual Stages

Actuators

Motorized Stages

Light Sources

Index

Part Number

## Part Number INDEX

Part Number	Products Name	Pages
RPSQ	Right Angle Prisms	B268
RR	Retaining Rings	C039
RS	Post Holders	D043
RS-CB	Clamp Screws (For post holders)	D045
RS232C/STR	RS232C Cable	G109
RSF	Sharp cut dichroic mirror	B247
RSN	Helicoidal Post Holders	D045
RSPCQ	Roshon polarizing Prism	B098
RSPMF	Roshon polarizing Prism	B098
<b>S</b>		
S1/S2	Light Guide for LED Spot Illumination	H038
S-DLB	Reasonable achromatic lens	B178
S-OFB	Reasonable Optical Flat	B290
S-OFBP	Reasonable Optical Flat	B290
S-OPB	Reasonable Optical Flat	B290
S-SLB-N	Reasonable Plano Concave Lens	B138
S-SLB-P	Reasonable Plano Convex Lens	B134
S-SLB-B-N	Reasonable Plano Concave Lens	B138
S-SLB-B-P	Reasonable Plano Convex Lens	B134
S-TFA	Reasonable Aluminum Flat Mirrors	B035
S-WSB	Reasonable Optical Flat	B290
SCF	Short Wave Cutoff Filters	B230
SC	Dog Point Set Screws	D050
SCR/SKB/SKD/DK	Screw Set	D063
SDB	Micro-step Driver Box with I/O	A030
SDLC	Dust Cover (Dust-proof Bag)	B347
SDM	Sharp cut dichroic mirror	B248
SFAI-OBL	Piezo Actuator for Objective lens of Inverted microscope type	G116
SFB	Spatial Filter Holders	C058
SFN	Micrometer Heads	F004
SFS-OBL	Piezo Actuator for Objective Lens	G116
SFS-H	Sigma Fine (Piezo) Stages (high stiffness type)	G114
SFS-120XY(WA)	XY Piezo Stages Aperture Type	G115
SGCAMSE	Automated Collimation Measurement Software	G022
SGDC	Remote Actuator	F012
SGEMCSE	Software for Positioning & Measurement	G025
SGLCESE	Software for Liquid Crystal Evaluation System	G022
SGMACS	Software for Positioning, Measurement & Analysis	G022
SGMMS	Image measuring software	A017
SGMV	SGMV series Translation Motorized Stages - AC servo Motor	G056
SGNETX	Component Software for VB.NET	G022
SGRM-200R	Reflection Measurement Systems	A052
SGSP-A	Motorized Goniometers - 5 Phase Stepping Motor	G086
SGSP-B	Motorized Goniometers - 5 Phase Stepping Motor	G088
SGSP-ACT	Compact Stepping Motor Actuators	F018
SGSP-OBL-3	Actuator for Objective Lenses (Stepper motor type)	G072
SGSP-40/60YAW	Rotation Motorized Stages	G074
SGSP-80/120/160YAW	Rotation Motorized Stages	G076
SGTERME	Terminal Software	G024
SGVIEW	Software for Monitoring & Control	G022
SHH	Micrometer Heads	F005
SHM	Micrometer Heads	F004
SHN	Micrometer Heads	F005
SHPF	Short Pass Filters	B245
SHOT-GS	2 axis / 4 axis Stage Controller	G102
SHOT-702	2 axis Stage Controller	G100 etc
SHPA	Differential Micrometer Heads	F009
SHPB	Differential Micrometer Heads	F009
SHPC	Differential Micrometer Heads	F009
SHPT	Differential Micrometer Heads	F009

Part Number	Products Name	Pages
SHPS	High Power Laser Shutter Unit	C066
SHS	Micrometer Heads	F004
SHS	Micrometer Heads	F005
SHSP	Smaller Differential Micrometer Heads	F009
SHSS	Micrometer Heads	F004
SHT	Micrometer Heads	F004
SHTS	Micrometer Heads	F004
SIRC/SUVC	IR/UV Sensor Cards	H008
SJT-02	Joystick Terminal	G106
SK	Color Camera	A026
SKBNCF	BNC female -RCA female conversion plug	A025
SKBNC	Connection cable	A025
SKH-8003	8-inch monitor	A025
SKHDMI	Connection cable	A026
SKLIR-1	LED Ring Illumination	A025
SKRCAF	RCA female -RCA female conversion plug	A025
SKSZMCTV1/2	C Mount Adapter for Trinocular Scope	A024
SKSZMAO	Assisted Objective Lenses	A025
SLA-100A	LED Light Source Device	H032 etc
SLB-25.4-SET	φ25.4 (BK7) Lens Kit	B132
SLB-N	Plano Concave Lenses (BK7)	B118
SLB-P	Plano Convex Lenses (BK7)	B108
SLB-B-N	Biconcave Lenses (BK7)	B129
SLB-B-P	Biconvex Lenses (BK7)	B123
SLC	Lens Cleaner	B346
SLCFU	Calcium Fluoride Plano Convex Lens	B162
SLCI	Coaxial Illumination	H030
SLD	Power supply for LD driving	A066
SLFI	Flat Illumination	H030
SLGE	Germanium Single Lens	B167
SLH	Caliper Variable Lens Holders	C041
SLLI	Line Sensor Illumination (Bright Field)	H031
SLLIH	Line Sensor Illumination (Dark Field)	H031
SLM	Micro Lenses	B156
SLP	Lens Paper	B346
SLRI	Ring Illumination	H029
SLRI-LA	Low Angle Ring Illumination	H029
SLSI	Silicon Plano Convex Lens	B166
SLSI	LED Spot Illumination	H027
SLSI-RGBM	RGB Color Mixing Unit	H028
SPS-SLSI	Power Supply for LED Spot Illumination	H027
SLSH	Sapphire Plano Convex Lens	B163
SLSQ-N	Plano Concave Lenses (Synthetic Fused Silica)	B118
SLSQ-P	Plano Convex Lenses (Synthetic Fused Silica)	B108
SLSQ-B-N	Plano Concave Lenses (Synthetic Fused Silica)	B129
SLSQ-B-P	Plano Convex Lenses (Synthetic Fused Silica)	B123
SLSQK-N	Plano Concave Lenses (Synthetic fused silica for Excimer Laser)	B118
SLSQK-P	Plano Convex Lenses (Synthetic Fused Silica)	B108
SLX	XY Slits for X Ray	C063
SLZS	Single Lenses for CO <sub>2</sub> Lasers	B164
SLZS2	Meniscus Lens for CO <sub>2</sub> Laser	B165
SMC	Multi Controller	A030
SMD	Power supply for LD driving (CW or pulse output)	A067
SND	Reflective Stepping type Variable ND Filter	B226
SOM-C	OptMike with Encoder	F016
SP-T	Adapter Plates for Pedestal	D041
SP-102	50×50mm Adapter Plates	D056
SP-103	Top Plates for KSP/KSPA	D056
SP-104	Bottom Plates for KSP-786M	D056
SP-109	Top Plates for TAR	D057
SP-113N	Conversion Plate	D057

Application Systems

Optics &amp; Optical Coatings

Holders

Bases

Manual Stages

Actuators

Motorized Stages

Light Sources

Index

Part Number

## Part Number INDEX

	Part Number	Products Name	Pages
Application Systems	SP-114N	Conversion Plate	D057
	SP-117	Bottom Plates for KSPA 806M, 1006M	D057
Optics & Optical Coatings	SP-121	M16 P1/M6 P1 Adapter Nuts	D058
	SP-121S	M16 P1/M6 P1 Adapter Nuts	D058
	SP-122	M6P1 Adapter Plates	D058
	SP-123	Top Plates for KSP-406M	D058
Holders	SP/UP	Adjustable Adapter Kits	D038
	SP-127-1	Top Plate Adapters for TAS-2060	D059
Bases	SP-129	Adapter Plates	D059
	SP-130	Adapter Plates	D059
	SP-131	Adapter Plates	D059
Manual Stages	SP-132	Adapter Plates	D060
	SP-133	Adapter Plates	D060
Actuators	SP-134	Adapter Plates	D060
	SP-135	Conversion Plate	D060
	SP-201	Conversion Plate	D061
Motorized Stages	SP-301	Conversion Plate	D061
	SPAHL	Long Working Distance Objective Lenses	B195 etc
	SPAL	Long Working Distance Objective Lenses	B195 etc
Light Sources	SPD	Cooling unit equipped power supply	A069
	SPF	Sheet Polarizers	B099
Index	SPFN	Sheet Polarizers	B099
	SPH	Polarizer Holders	C049
	SPS	Small Pedestal Base	D041
	SPS-SP	Small Pedestal Adapters	D041
	SRC	Remote Controller	F013
	SRS-CMR	Camera Observation Unit	A040
	SRS	Schlieren	A037
	SRS-WL	White Light Source Component	A040
	SSH-C	Shutter Controller	C067 etc
	SSH	Automatic Shutters	C066
STC	Color Camera	A026	
STD	Power supply for Peltier	A068	
STDS	Power supply for Peltier	A068	
SWC	Wiping Cloth	B347	
SXD	Cooling unit equipped power supply	A068	
<b>T</b>			
	TADC-401	X axis Aluminium Stages	E068
	TADC-402W	XY axis Aluminium Stages	E068
	TADC-601	X axis Aluminium Stages	E070
	TADC-602W	XY axis Aluminium Stages	E070
	TADC-L	Z axis Aluminium Stages	E100
	TAF-ES-DM-40	Auto Focus (Separate type)	A021
	TAF-SS-OBL-3	Auto Focus (TTL type)	A020
	TAMM	Aluminum Crossed Roller Guide Motorized Stage	G060
	TAM-3L	Z axis Aluminum Crossed Roller Slide Stages (Vertical)	E098
	TAM-401	X axis Aluminum Crossed Roller Slide Stages	E046
	TAM-4L	XZ axis Aluminum Crossed Roller Slide Stages (Vertical)	E128, E130
	TAM-402	XY axis Aluminum Crossed Roller Slide Stages	E046
	TAM-5L	XYZ axis Aluminum Crossed Roller Slide Stages (Vertical)	E148, E150
	TAM-601	X axis Aluminum Crossed Roller Slide Stages	E048
	TAM-602	XY axis Aluminum Crossed Roller Slide Stages	E048
	TAM-651	X axis Aluminum Crossed Roller Slide Stages	E050
	TAM-652	XY axis Aluminum Crossed Roller Slide Stages	E052
	TAM-801	X axis Aluminum Crossed Roller Slide Stages	E054
	TAM-802	XY axis Aluminum Crossed Roller Slide Stages	E054
	TAM-1001	X axis Aluminum Crossed Roller Slide Stages	E056
	TAM-1002	XY axis Aluminum Crossed Roller Slide Stages	E056
	TAM-1201	X axis Aluminum Crossed Roller Slide Stages	E058

Part Number	Products Name	Pages
TAM-1202	X axis Aluminum Crossed Roller Slide Stages	E060
TAM-10161	X axis Long Travel Aluminum Crossed Roller Slide Stages	E062
TAM-10162	XY axis Long Travel Aluminum Crossed Roller Slide Stages	E062
TAMC-1	X axis Long Travel Aluminum Crossed Roller Slide Stages	E064
TAMC-2	XY axis Aluminum Crossed Roller Slide Stages (Large)	E066
TAR-1	X axis Dual Drive Rack and Pinion Dovetail Stages	E080
TAR-3D	Z axis Dual Drive Rack and Pinion Dovetail Stages	E105
TAR-4L	XZ axis Rack and Pinion Dovetail Stages	E134
TAR-4D	XZ axis Fine and Coarse Drive Rack and pinion Dovetail Stages	E135
TAR-5L	XYZ axis Rack and Pinion Dovetail Stages	E154
TAR-D	X axis Dual Drive Rack and Pinion Dovetail Stages	E080
TAR-L	Z axis Rack and Pinion Dovetail Stages (Vertical)	E104
TARW/TAR	X axis Rack and Pinion Dovetail Stages	E078
TARW/TAR-2	XY axis Rack and Pinion Dovetail Stages	E082
TARW-L	Z axis Rack and Pinion Dovetail Stages (Vertical)	E104
TAS-1	X axis Leadscrew Stages	E076
TAS-2	XY axis Leadscrew Stages	E076
TAS-4L	XZ axis Leadscrew Stages	E134
TAS-5L	XYZ axis Leadscrew Stages	E154
TASB-1	X axis Preset Stages	E072
TASB-2	XY axis Preset Stages	E074
TASB-3	Z axis Preset Stages	E102
TASB-4	XZ axis Preset Stages	E132
TASB-5	XYZ axis Preset Stages	E152
TAT	Two-axis Pinholes / Objective Holders	C060
TAT-AD20-TSD-40801S	Concave Sample Holder Module	A047
TCA	Aluminum Concave Mirrors (Protective coating)	B304
TCAN	Aluminum Concave Mirrors (Without protective coating)	B304
TCBS	Concave Mirror Substrates	B304
TCEA	Ellipsoidal mirror	B036
TCPA	Paraboloid mirror	B037
TDC	Dry Cabinet (Electronic Drying Case)	B348
TFA	Aluminum Mirrors	B030
TFA-30C05-10-TSD-401S	Moveable Mirror Module	A047
TFA-30C05-10-TSD-40801S	Optical Path Switching Mirror Module	A047
TFAE	Aluminum Mirrors	B030
TFAG	Silver Mirrors	B040
TFAEFL	Large Aluminum Mirrors	B034
TFAN	Aluminum Mirrors	B030
TFAQ	Aluminum Mirrors	B030
TFAQN	Aluminum Mirrors	B030
TFG	Gold Flat Mirrors	B038
TFGS	Gold Silicon Mirrors	B038
TFHSM	Super Mirror	B010
TFM	Laser Line Mirrors	B024
TFMHP	Dielectric Mirrors for High Power Laser	B020
TFMS	Ultra Broadband Dielectric Mirrors	B022
TFVM	0-45° Wide Incidence Dielectric Mirrors	B027
TGH	Test Target Holders	C070
TLH	Mini Lens Holders	C040
TRC	C shape intermediate ring	D044
TSD-251	X axis Steel Extended Contact Slide Stages	E018
TSD-252	XY axis Steel Extended Contact Slide Stages	E018
TSD-254	XZ axis Steel Extended Contact Slide Stages	E116
TSD-254L	XZ axis Steel Extended Contact Slide Stages (Vertical)	E124
TSD-255	XYZ axis Steel Extended Contact Slide Stages	E136
TSD-255L	XYZ axis Steel Extended Contact Slide Stages (Vertical)	E144
TSD-3	Z axis Steel Extended Contact Slide Stages	E086, E088
TSD-401	X axis Steel Extended Contact Slide Stages	E020
TSD-402	XY axis Steel Extended Contact Slide Stages	E020
TSD-404	XZ axis Steel Extended Contact Slide Stages	E116

Application Systems

Optics & Optical Coatings

Holders

Bases

Manual Stages

Actuators

MotORIZED Stages

Light Sources

Index

Part Number

## Part Number INDEX

	Part Number	Products Name	Pages
Application Systems	TSD-404L	XZ axis Steel Extended Contact Slide Stages (Vertical)	E124
	TSD-405	Z axis Steel Extended Contact Slide Stages	E136
	TSD-405L	XYZ axis Steel Extended Contact Slide Stages(Vertical)	E144
Optics & Optical Coatings	TSD-601	X axis Steel Extended Contact Slide Stages	E022
	TSD-602	XY axis Steel Extended Contact Slide Stages	E022
Holders	TSD-604	XZ axis Steel Extended Contact Slide Stages	E118
	TSD-604L	XZ axis Steel Extended Contact Slide Stages (Vertical)	E126
Bases	TSD-605	XYZ axis Steel Extended Contact Slide Stages	E138
	TSD-605L	XYZ axis Steel Extended Contact Slide Stages (Vertical)	E146
	TSD-654	Z axis Steel Extended Contact Slide Stages	E118
Manual Stages	TSD-654L	XZ axis Steel Extended Contact Slide Stages (Vertical)	E126
	TSD-655	XYZ axis Steel Extended Contact Slide Stages	E138
	TSD-655L	XZ axis Steel Extended Contact Slide Stages (Vertical)	E146
Actuators	TSD-801	X axis Steel Extended Contact Slide Stages	E028
	TSD-802	XY axis Steel Extended Contact Slide Stages	E028
Motorized Stages	TSD-804	XZ axis Steel Extended Contact Slide Stages	E120
	TSD-805	XYZ axis Steel Extended Contact Slide Stages	E140
	TSD-1001	X axis Steel Extended Contact Slide Stages	E030
Light Sources	TSD-1002	XY axis Steel Extended Contact Slide Stages	E030
	TSD-1004	XZ axis Steel Extended Contact Slide Stages	E120
	TSD-1005	XYZ axis Steel Extended Contact Slide Stages	E140
Index	TSD-1201	X axis Steel Extended Contact Slide Stages (Filtered)	E032
	TSD-1202	XY axis Steel Extended Contact Slide Stages (Filtered)	E034
	TSD-1204	XZ axis Steel Extended Contact Slide Stages	E122
	TSD-1205	XYZ axis Steel Extended Contact Slide Stages	E142
	TSD	X axis Steel Extended Contact Slide Stages	E036
	TSD-L	Z axis Steel Extended Contact Slide Stages (Vertical)	E090
	TSD-LB	L Angle Brackets	E092
	TSD-SDM	X axis Steel Extended Contact Slide Stages (Coarse/Fine Movement)	E036
	TSD-SZ	Z axis Steel Extended Contact Slide Stages (Vertical Mounting)	E094
	TSD-SZ	Z axis Steel Extended Contact Slide Stages (Vertical Mounting)	E096
TSD-UD	Z axis Steel Extended Contact Slide Stages (Inverted)	E086	
TSD-651	X axis Steel Extended Contact Slide Stages	E024	
TSD-652	XY axis Steel Extended Contact Slide Stages	E026	
TSD-651-M6	X axis Steel Extended Contact Slide Stages	E038	
TSD-651-UU	X axis Steel Extended Contact Slide Stages	E038	
TSD-652-M6	XY axis Steel Extended Contact Slide Stages	E038	
TSD-652-UU	XY axis Steel Extended Contact Slide Stages	E038	
TSDH-251	X axis General-purpose type Stainless Stages	E040	
TSDH-252W	XY axis General-purpose type Stainless Stages	E040	
TSDH-401	X axis General-purpose type Stainless Stages	E042	
TSDH-402W	XY axis General-purpose type Stainless Stages	E042	
TSDH-601	X axis General-purpose type Stainless Stages	E044	
TSDH-602	XY axis General-purpose type Stainless Stages	E044	
TSDH-L	Z axis General-purpose type Stainless Stages	E093	
TSDS-1	X axis Stainless Steel Extended Contact Slide Stages	E200	
TSDS-2	XY axis Stainless Steel Extended Contact Slide Stages	E202	
TSDS-3	Z axis Stainless Steel Extended Contact Slide Stages	E204	
TSDS-3L	Z axis Stainless Steel Extended Contact Slide Stages (Vertical)	E205	
TSDS-4	XZ axis Steel Extended Contact Slide Stages	E206	
TSDS-4L	XZ axis Stainless Steel Extended Contact Slide Stages(Vertical)	E208	
TSDS-5	XYZ axis Stainless Steel Extended Contact Slide Stages	E210	
TSDS-5L	XYZ axis Stainless Steel Extended Contact Slide Stages (Vertical)	E212	
TSDT-401	Low-profile X axis Steel Stages	E016	
TSDT-601	Low-profile X axis Steel Stages	E016	
TSM	High Load Capacity Jacks	E115	
<b>U</b>			
	UDL	Ultra-violet Achromats	B185
	UFCL	Front converter lenses	A015

Part Number	Products Name	Pages
<b>ULWZ</b>	Ultra Long Working distance Zoom Microscope	<b>A014</b>
<b>ULWZ-M</b>	Ultra Long Working distance Zoom Microscope	<b>A014</b>
<b>USB</b>	USB Cable	<b>G109</b>
<b>USP</b>	Plastic polarizer	<b>B102</b>
<b>UTVAF</b>	UV Transmitting Filters	<b>B232</b>
<b>UZOL</b>	Ultra Long working distance objective lenses	<b>A015</b>
<b>V</b>		
<b>VBS</b>	Variable Beamsplitter	<b>B062</b>
<b>VND</b>	Variable Reflective Neutral Density Filters	<b>B224</b>
<b>VPF</b>	Bandpass Interference filters	<b>B254</b>
<b>VPF</b>	Bandpass Interference filters	<b>B257</b>
<b>VPFHT</b>	Laser Line Filter	<b>B250</b>
<b>VSGSP-60</b>	Vacuum Applications Miniature Motorized Stages	<b>G094</b>
<b>VSGSP-(X)</b>	Vacuum Compatible Motorized Stages	<b>G092</b>
<b>VSGSP-YAW</b>	Vacuum Applications Miniature Motorized Stages	<b>G096</b>
<b>W</b>		
<b>WBMA</b>	Optical Windows with anti-reflection coating	<b>B316</b>
<b>WBNA</b>	Light path corrector	<b>B062</b>
<b>WGP</b>	Sub-micron Worm Drive Micrometer Heads	<b>F007</b>
<b>WGPF</b>	Wire grid polarizing filter	<b>B100</b>
<b>WPM</b>	Mica Waveplates	<b>B090</b>
<b>WPPB</b>	Wollaston Prisms	<b>B097</b>
<b>WPPC</b>	Wollaston Prisms	<b>B097</b>
<b>WPQ</b>	Quartz Waveplates	<b>B087</b>
<b>WPQG</b>	Air Gap Type Waveplates	<b>B086</b>
<b>WPQW</b>	Broadband Quartz Waveplates	<b>B084</b>
<b>WSB</b>	Wedged Substrates (BK7)	<b>B300</b>
<b>WSCFSP</b>	Low Scattering Wedged Substrats (Synthetic Fused Silica)	<b>B286</b>
<b>WSMFSP</b>	Low Scattering Wedged Substrats (Synthetic Fused Silica)	<b>B286</b>
<b>WSQNA</b>	Light path corrector	<b>B062</b>
<b>WSQNAHP</b>	AR Coated Windows for High Power Laser	<b>B317</b>
<b>WSSQ</b>	Wedged Substrates (Synthetic Fused Silica)	<b>B300</b>
<b>WSSQK</b>	Wedged Substrates (Synthetic fused silica for Excimer Laser)	<b>B300</b>
<b>WSSQSP</b>	Low Scattering Wedged Substrats (Synthetic Fused Silica)	<b>B286</b>
<b>WZSA</b>	ZnSe Windows for Infrared Laser	<b>B321</b>
<b>Y</b>		
<b>YHS</b>	Harmonic Separators	<b>B064</b>
<b>YIF</b>	Interference filters	<b>B251</b>
<b>YL-120H</b>	YL-120H Model (Goggle shaped, reinforced glass type)	<b>H023</b>
<b>YL-130</b>	YL-130 Model (Goggle shaped)	<b>H023</b>
<b>YL-250G</b>	YL-250G Model (Over prescription glasses, reinforced glass type)	<b>H023</b>
<b>YL-290</b>	YL-290 Model (Eyeglass shaped)	<b>H022</b>
<b>YL-335</b>	YL-335 Model (Over prescription glasses type)	<b>H022</b>
<b>YL-500</b>	Laser Safety Windows (made of acrylic resin)	<b>H015</b>
<b>YL-600</b>	Laser Safety PVC Films	<b>H014</b>
<b>YL-717</b>	YL-717 Model (Over prescription glasses type)	<b>H021</b>
<b>YL-760</b>	YL-760 Model (Three-way type)	<b>H020</b>
<b>YLC-1</b>	Laser Shield Curtain	<b>H013</b>
<b>YLC-2</b>	Laser Shield Curtain	<b>H013</b>
<b>YVAC-GREASE-C</b>	Fomblin Vacuum Grease	<b>G110</b>
<b>Z</b>		
<b>ZAS-FAC-PST</b>	Focus unit	<b>A016 etc</b>
<b>ZBR</b>	Z Angle Brackets	<b>D052</b>
<b>ZMM</b>	Zoom Stereo Microscope	<b>A024</b>
<b>ZOL</b>	Long working distance objective lenses	<b>A015</b>

Application Systems

Optics &amp; Optical Coatings

Holders

Bases

Manual Stages

Actuators

Motorized Stages

Light Sources

Index

Part Number



# Part Number INDEX |

Application Systems

Optics & Optical Coatings

Holders

Bases

Manual Stages

Actuators

Motoeized Stages

Light Sources

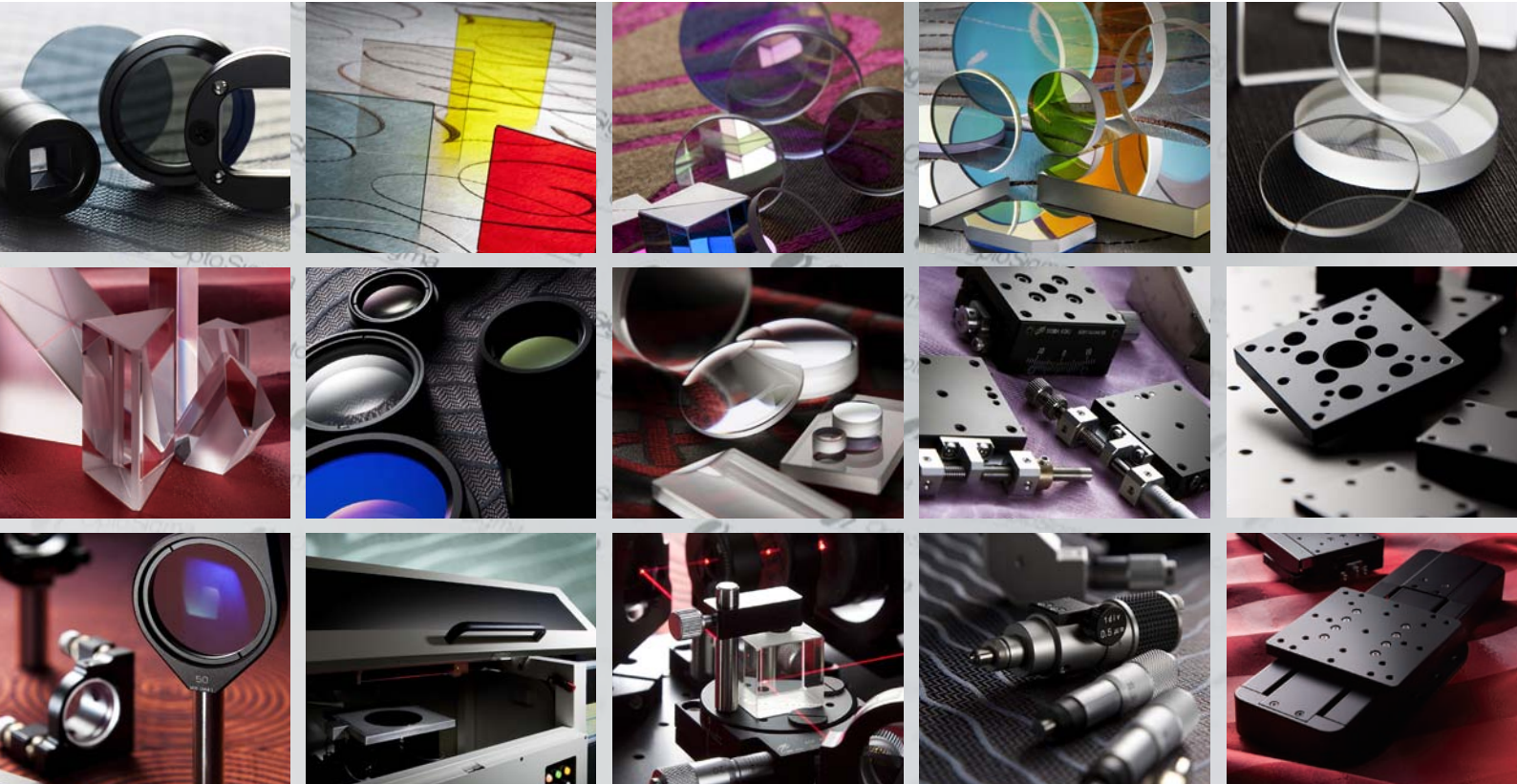
Index

Part Number	Products Name	Pages
ZPSC-T1	Partial Light blocking cassette	A016
ZRL-ZOL15	Ring light guide	A016
ZRCL	Rear Converter	A016

Part Number







 **SIGMA KOKI CO., LTD.**

**Tokyo Head Office**

5F, SIGMA KOKI Tokyo Head office 1-19-9, Midori, Sumida-ku,  
Tokyo, 130-0021, JAPAN  
TEL: +81-3-5638-8228 FAX: +81-3-5638-6550  
URL: <http://www.sigma-koki.com>  
E-mail: [international@sigma-koki.com](mailto:international@sigma-koki.com)

 **OptoSigma®**

**OptoSigma Corporation**

3210 S.Croddy Way, Santa Ana, California 92704 U.S.A.  
TEL: +1-949-851-5881 FAX: +1-949-851-5058  
URL: <http://www.optosigma.com>  
E-mail: [sales@optosigma.com](mailto:sales@optosigma.com)

 **OptoSigma®**  
*Europe*

**OptoSigma Europe S.A.S.**

6 Avenue des Andes, 91940 Les Ulis, Essonne, FRANCE  
TEL: +33-1-6918-1700 FAX: +33-1-6010-0929  
URL: <http://www.optosigma-europe.com>  
E-mail: [sales@optosigma-europe.com](mailto:sales@optosigma-europe.com)

